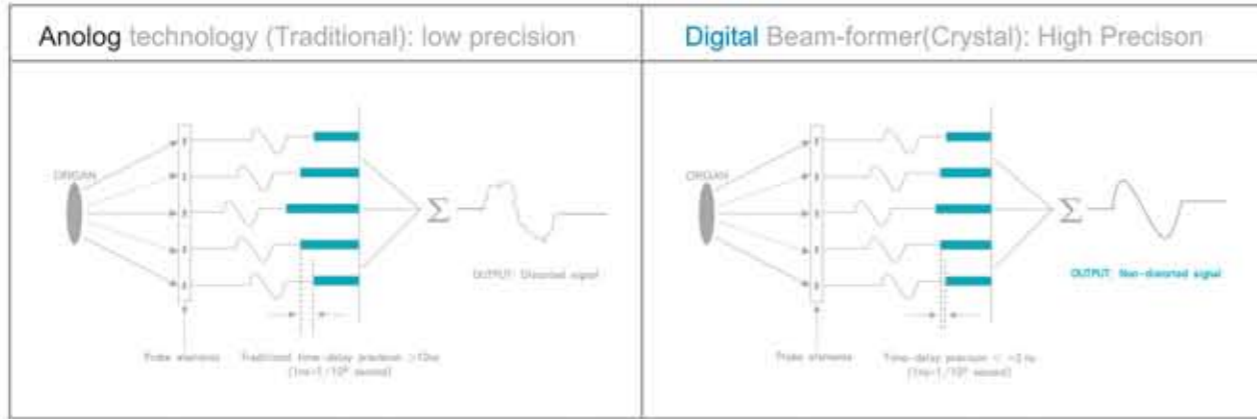
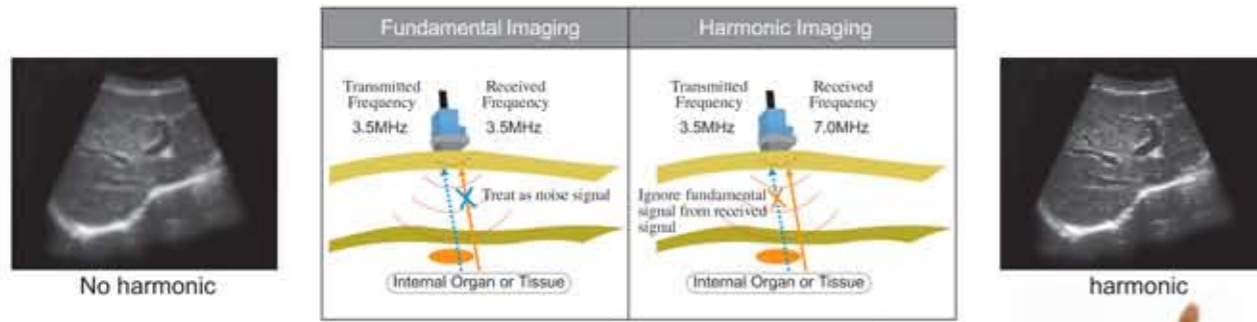




Full digital beam-former



Harmonic Imaging



Ergonomic Keyboard

- ◇ Back-lit keyboard for good visibility in dark room
- ◇ 6 STC slides for easy adjustment
- ◇ Multi-function knob and toggle for quick adjustment
- ◇ Setup key allows user-defined pre-settings
- ◇ Neat & Clear keyboard layout, doctor can remember easily
- ◇ Print directly from keyboard



Multifunctional Ports

- ◇ 2 USB Ports



- ◇ VGA Port

* Can connect external computer monitor



Convenient Print

- ◇ Direct print from Keyboard
- ◇ Can use PC printer to replace Video printer, saving investment cost (Optional)
- ◇ Convenient printing of images and reports on the same page. (Note1)



Special Design for VET

- ◇ Wide applications for VET
 - * Canine, Feline, Equine, Bovine, Ovine
 - * Pregnancy detection, abdominal, cardiology, small parts, tendon
- ◇ Special probes for VET
 - * Each probe has 4 step multi-frequency, allows different penetration
- ◇ Special software for VET (see page 4)



Innovative Technology



CHISON 8300VET

DIGITAL ULTRASOUND SYSTEM

Specifications

Scanning Methods	Electronic Convex/Electronic Linear/Electronic micro-convex
Applications	Abdomen, OB/GYN, Small parts, Urology, Cardiology, Pediatrics
Display modes	B, B/B, 4B, M, B/M
Gray scale	256 levels
Scanning Techniques	Real-time dynamic imaging: RDF, RDA, DFS, DRA
	Harmonic imaging
Scanning Depth	240mm Max(depend on the probe types)
Probe Frequency	2.5Mhz~9Mhz(Depend on the probe types)
No. of Probe Connectors	1(Standard), 2(Optional)
Monitor	10-inch SVGA high resolution monitor
CINE loop	128 frames
Image storage	Permanent storage on Built-in memory, and USB disk
Zoom	4-8 step
Image Processing	Pre-processing: IP selection, dynamic range, edge enhancement, smooth, frame averaging, scanning angle selection, line density selection
	Post-processing: γ correction, gray transformation, gray rejection
	STC: 6 slides for Near, Far and Overall gain control.
Image Reversing	Left/right, Up/Down
Software Packages	Canine: GS, CRL, HD, BD
	Feline: HD, BD
	Equine: GA
	Bovine: BPD, CRL, Trunk Diameter
	Ovline: BPD, CRL, Trunk,Diameter
General Measurements	B mode: distance, circumference, area, volume, ratio, angle, % stenosis, histogram, profile
	M mode: distance, time, velocity, heart rate
Archives Management	patient information management
Documentation	Full screen documentation, hospital name, patient name, date/time
	Annotation database available, pre-saved phrases can be recalled
Power Supply	AC 230V \pm 10%, 50Hz(standard)/AC110V \pm 10%, 60Hz (Upon customer request)
Standard System	main unit+ 5.0Mhz micro convex probe + 1 probe connector + 2 USB ports + VGA port
Options	7.5Mhz linear probe, 3.5Mhz convex probe, 5.0MHz Linear rectal probe, 2nd probe connector, USB flash disk, Trolley(TR-8000), Video printer, PC printer

CHISON MEDICAL IMAGING CO.,LTD.

Address: NO.8, XIANG NAN ROAD, SHUO FANG,
NEW DISTRICT, WUXI, CHINA 214142

Tel: 0086-510-85310197, 85310593, 85310937, 85311707

Fax: 0086-510-85310726

Http://www.chison.com.cn

E-mail: export@chison.com.cn

DIGITAL ULTRASOUND SYSTEM



CHISON 8300VET
DIGITAL ULTRASOUND SYSTEM



A Digital Compact, Just for VET!

Http://www.chison.com.cn